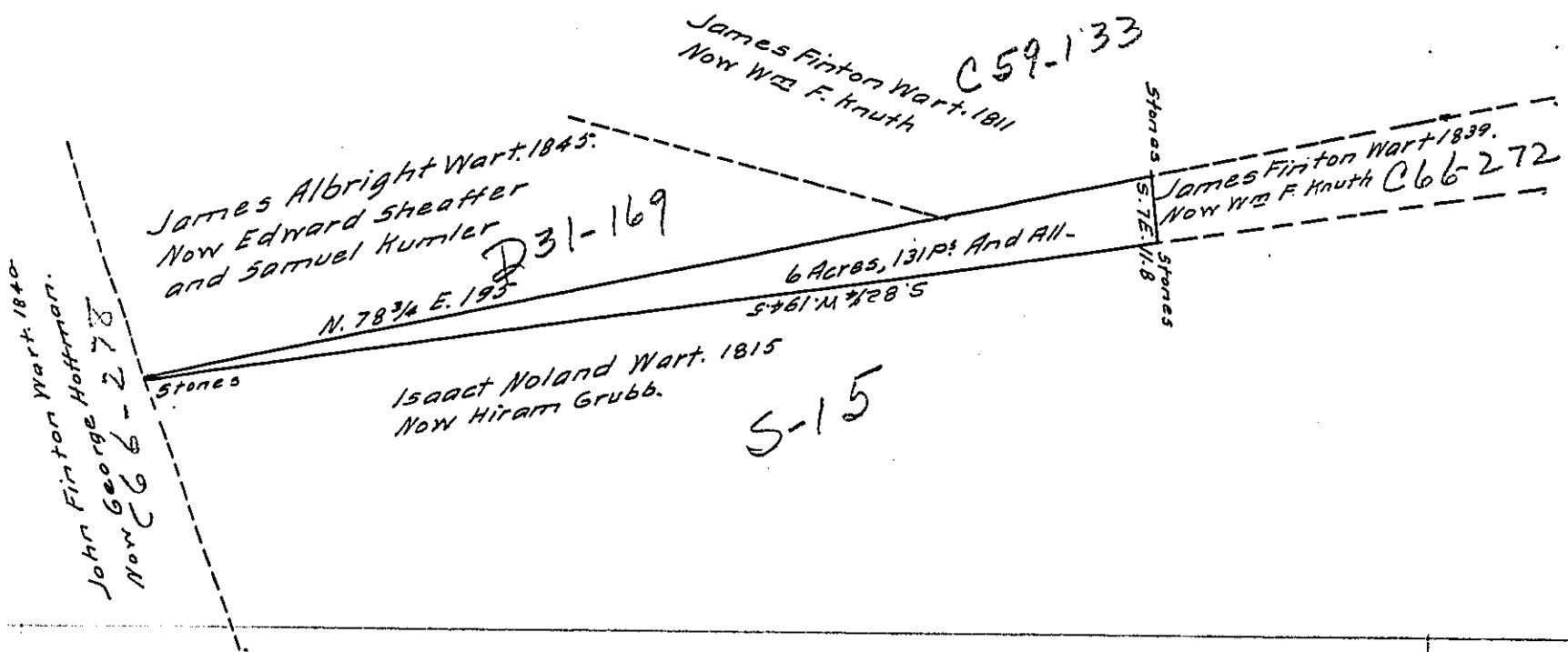


Scale 4 rods to inch



A Draft of a tract of land situated in the Township of Buffalo and County of Perry, containing (6) Six acres, 131 perches and allowance of six per cent for roads, etc. surveyed the 14th & 15 day of May 1914, in pursuance of a warrant granted to Samuel F. Humler dated the 16th day of March 1914.

To Hon. Henry Houch,
Secretary of Internal Affairs.

Gard. C. Palm,
County Surveyor.

IN TESTIMONY that the above is a copy of the original remaining on file in the Department of Internal Affairs of Pennsylvania, made conformably to an Act of Assembly approved the 16th day of February, 1833, I have hereunto set my Hand and caused the Seal of said Department to be affixed at Harrisburg, this third day of February 1916

Henry Houch
Secretary of Internal Affairs.